

The Potting Shed May 2024 No. 78



**The Summer Sales
Day is on Saturday
18 May, 10:00am
to 4:00pm.
Buy bedding
plants, perennials
and bedding
plants.
Narrow gauge and
model railways.
Opening of new
building.**

POPPLETON COMMUNITY RAIL WAY NURSERY

Station Road Upper Poppleton
York YO26 6QA

☎ 01904 797623
07800 501382
pcrn.info@yahoo.co.uk

poppletonrailwaynursery.co.uk

Charity Number: 1148341

Company Registration number:
06211163

Editorial

We have the Summer Sales day coming up on 18 May where the new building is going to be opened. There has been an outbreak of white dots and there is an interesting item from the Nursery archives.

Railway and building work

Since the last issue of the Potting Shed we have had fewer attendees on a Thursday. We now have a list of jobs to be done. Bob Brook and his son Tim have had a look at the fast tick over on *LoweCo* and have made progress on fixing it so that it is now a more useable vehicle. With the changeover of the gate guardian the stock book is in the process of being updated. This includes placing more emphasis on the motorised vehicles and also including a brief history of the narrow gauge railway.

Station car park and sales day parking

With the introduction of charging at the station car park, visitors are warned that parking in the station car park may result in a fine. There is a limited amount of parking at the Nursery in the Nursery's car park and adjacent to the portacabin. Evidence at the last sales day, indicates

that drivers of large vehicles, e.g. people carriers, may find parking difficult if next to the portacabin. Visitors might consider using smaller vehicles when visiting the Nursery.

Sales days

The Nursery's Buy One Get One Free summer bedding plants sales day will be on Saturday 6 July, 10:00am – 4:00pm. Buy bedding plants, perennials and bedding plants. Narrow gauge, model railways and refreshments. The Nursery will also be open between 10:00am and 1:00pm on Saturday mornings 25 May, 1, 8, 15, 22 and 29 June.

The Nursery will also have a stall at the annual Poppleton Sports Day on the Green 1:00pm to 4:00pm on Monday 27 May.

The new building

The new building will be formally opened at 11:00 on the sales day on 18 May.



Station adoption

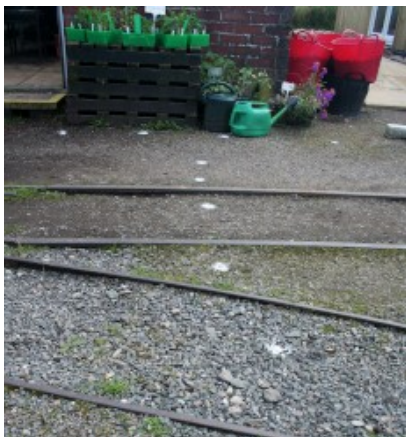
We have all completed Northern's safety briefing and submitted our plan for the coming year, together

with a request for modest funding to cover the cost of plants and items for routine station maintenance. We are looking forward to Danielle Clarkson (Northern's Regional Community & Sustainability Manager East Region) visiting us on Monday 3 June. The usual weeding and trimming continues but planting has been held up by the recent wet weather.

Donated books

We still have several railway books for sale, if you are interested come along to the sale on 18 April.

Spotted at the Nursery

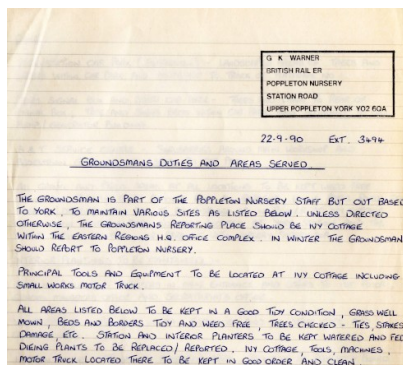


A series of painted dots has mysteriously appeared at the Nursery. These have been painted outlining the service runs between the various buildings in preparation for connecting an electrical supply to the new building.

Archive corner

Whilst looking through the Nursery's archive I came across the following job de-

scription for Groundsman who reported to the manager at Poppleton. They would work at Poppleton during the winter, working away from Poppleton for the remainder of the year. The document dates from September 1990 and was prepared by the Nursery's manager Graham Warner.



Below is a transcript of the article.

Groundsmans [sic] Duties and Areas Served

The groundsman is part of the Poppleton Nursery staff but out based to York, to maintain various sites as listed below. Unless directed otherwise, the Groundsmans [sic] reporting place should be Ivy Cottage within the Eastern Regions [sic] H.Q. complex¹, in winter the groundsman should report to Poppleton Nursery.

Principal tools and equipment to be located at Ivy Cottage including small works motor truck.

All areas listed below to be kept in a good tidy condi-

¹ This is between where the York Council offices and the archway in the city wall near Queen Street now are.

tion, grass well mown, beds and borders tidy and weed free, trees checked — ties, staxes [sic], dieing [sic] plants to be replaced/reported. Ivy Cottage, tools, machines, motor truck located there to be kept in good order and clean. Defects to be reported to the Nursery Supervisor.

Outside areas to be maintained:-

Eastern Region H.Q. Complex grounds:- lawns at Park Side Ave. and War Memorial; shrubberies at Ivy Cottage, Hudson House pond, Park Side Ave., War Memorial entrance; bedding areas at Hudson House frontage and West Offices patio; flower tubs at Park Side Ave., patio and main car park, plus two tubs outside main H.Q. entrance.

Plant Engineers Offices, Leeman Road — lawns, shrubberies, and bedding areas in front of office and within lawn. Tool shed located here also.

York Station — planters on platforms, concourses and portico.

York Station car park (extension) — landscaped areas of trees and shrubs within car park and adjacent to track of platform No. 1.

S & T Service Centre — shrubberies around main workshop and pedestrian entrance off Leeman Rd. car park.

All gravel and paved areas at all locations to be kept weed free leaves and rubbish to be removed from all

gardens, lawns, paths, roads, etc. Rubbish/debris/weeds etc. to be disposed of in bunker at Ivy Cottage, or in local suitable skips normally located at York Station and the S & T Service Centre, or arrange with Nursery Supervisor.

Interior plantings to be maintained:-

Main H.Q. Building — Planters in main entrance and stairs to 1st floor, Gen-

eral Managers [sic] office and Secretariats [sic] office.

West Offices — Planters in main entrance and in staff cafe and coffee lounge.

Hudson House — Trough in reception area. Planters in Property Offices on ground and 5th floors.

37 Tanner Row — Planters within Regional Architects [sic] office and studios.

York Station — Planters within Travel Centre and two waiting rooms.

S & T Service Centre — Planter in main entrance area.

Other offices at request (re-placement plants only).

G.K. Warner, Nursery Supervisor.

A Nursery miscellany

